

Classifications

DIN 8555	EN 14700
MSG 3 GF-60-GPZ	T Fe 8

Characteristics and field of use

UTP AF ROBOTIC 603 is a seamless, chromium-molybdenum-tungsten-vanadium-alloyed, metal-cored wire for abrasion and moderate stress-resistant surfacing applications up to 550°C.

For steels that are difficult to weld, a buffer layer using UTP AF 155 should be applied.

Thanks to its constant wire feed and excellent weldability, this wire is especially suited for automated welding.

Application field:

Crushing hammers, bulldozer blades, bucket teeth, bucket lips and hammers.

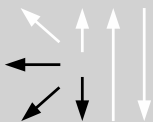
Typical analysis in %

C	Mn	Si	Cr	Mo	V	W
0.5	1.1	1.0	5.5	1.3	0.3	1.3

Typical mechanical properties

Hardness as welded: 57-62 HRC

Welding positions



Current type: = +

Shielding gas: ArCO₂ (EN ISO 14175: M21)

Flow rate: 14 – 20 l/min

Recommended welding parameters

Diameter [mm]	Spools	Weight [kg]	Amperage [A]	Voltage [V]
1.2	B300	16	120-300	20-32
1.4	B300	16	150-320	20-31
1.6	B300	16	180-420	22-34
2.0	B300	16	170-450	25-35

Other diameters on request.