

Classifications

DIN 8555	EN 14700
MSG 6-GF-60-GP	T Fe 8

Characteristics

UTP AF ROBOTIC 601 is a seamless chromium-niobium alloyed metalcored wire for hardfacing using Ar-CO₂ shielding gas, without slag. The hardfacing deposit yields a high hardness as a result of special carbides but remains crack free. A buffer of UTP A 63 is only recommended for critical materials or for multilayer build up. In these cases only the last two beads should be welded with UTP AF ROBOTIC 601. Well suited for wear resisting parts subject to heavy impact and shock, as well as abrasion. Weld metal is machinable only by grinding.

Field of use

This wire is especially suitable for recycling equipment, cutting edges, conveyor chains, crusher jaws and cones.

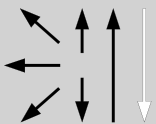
Typical analysis in %

C	Mn	Si	Cr	Nb
1.4	0.7	1.0	6.0	5.5

Typical mechanical properties

Hardness: 57 – 62 HRC

Welding positions



Current type: = +

Shielding gas: M21 (EN ISO 14175)

Flow rate: 15 – 18 l/min

Form of delivery and welding parameters

Diameter [mm]	Packing unit	Weight [kg]	Amperage [A]	Voltage [V]
1.2	B300	16	120 – 250	20 – 31
1.6	Drum	250	180 – 320	25 – 35